



## Determination of Heavy Metals in Soil around Amasoma Community in Bayelsa State, Nigeria

Ebimobowei Assayomo <sup>a\*</sup>, Dorcas Dauta Bawo <sup>a</sup>,  
Gbe-emi kemepade Dieware <sup>b</sup>, Amaka Mariagoretti Buseri <sup>c</sup>  
and Ebikabowei John Debekeme <sup>c</sup>

<sup>a</sup> Department of Biological Sciences, Faculty of Science, Niger Delta University Wilberforce Island, P. O. Box 071, Bayelsa State, Nigeria.

<sup>b</sup> School of Applied Science, Department of Science Laboratory Technology, Federal polytechnic Ekowe, Bayelsa State, Nigeria.

<sup>c</sup> Department of Biological Sciences, Niger Delta University Wilberforce Island, P.O. Box 071, Bayelsa State, Nigeria.

### Authors' contributions

This work was carried out in collaboration among all authors. All authors read and approved the final manuscript.

### Article Information

DOI: 10.9734/JABB/2021/v24i1030244

Editor(s):

(1) Dr. Fernando José Cebola Lidon, Universidade Nova de Lisboa, Portugal.

Reviewers:

(1) Rehab Mohamed Atta Mahmoud ElDesoukey, Shaqraa University and National Research centre, Egypt.

(2) Abdissa Bekele Sima, Mettu University, Ethiopia.

(3) Dorota Porowska, University of Warsaw, Poland.

Complete Peer review History, details of the editor(s), Reviewers and additional Reviewers are available here:

<https://www.sdiarticle5.com/review-history/77605>

Original Research Article

Received 12 September 2021

Accepted 25 November 2021

Published 11 December 2021

### ABSTRACT

**Aims:** Anthropogenic activities such as crude oil exploration and exploitation has led to the suspicion of heavy metals contamination in the study area. This study investigated the concentration of zinc, nickel, lead and cadmium in the soil extracted from the area where Scent Leaf (*Ocimum gratissimum*) and Pawpaw tree (*Carica papaya*) are grown in Amassoma community, Bayelsa State, Nigeria.

**Study Design:** Scent leaf (*Ocimum gratissimum*) and Pawpaw tree (*Carica papaya*) soils from where these plants are grown were randomly collected for heavy metal analysis from within Amassoma community in Southern Ijaw Local Government Area of Bayelsa State, Nigeria

**Place and Duration of Study:** This study was carried out in Biological Sciences, Faculty of Science, Niger Delta University, Wilberforce Island, Amassoma, Bayelsa State between March 2019 to September 2019

**Methodology:** Scent leaf (*Ocimum gratissimum*) and Pawpaw tree (*Carica papaya*) soils were digested and analyzed for heavy metals using Atomic Absorption Spectrophotometer (AAS, model S471096). The method used was wet-ashing method for the analysis.

**Results:** the concentrations of Lead (Pb), Nickel (Ni), Cadmium (Cd), and Zinc (Zn), in pawpaw soil and scent leaf soil. From the sample data analysis, the average lead (Pb) contents in pawpaw soil and scent leaf soil were 1.283 mg/kg and 1.44 mg/kg respectively. The average Cadmium (Cd) in pawpaw soil and scent leaf soil were 0.256 mg/kg and 0.256 mg/kg respectively. The average Nickel (Ni) compositions in pawpaw soil and scent leaf soil were 4.71 mg/kg and 5.09 mg/kg respectively. While the Average Zinc (Zn) in pawpaw soil and scent leaf soil is 2.280 mg/kg and 2.160 mg/kg respectively. The soil analyzed for heavy metals were below the threshold target values recommended by the WHO.

**Conclusion:** The Scent leaf (*Ocimum gratissimum*) and Pawpaw tree (*Carica papaya*) soils analyzed for heavy metals were below the permissible limit recommended by WHO for soil safety. The result from the present study revealed that there may not be soil contamination as a result of the selected heavy metals, however, It is recommended that caution should be taken in regulating the anthropogenic activities that may tend to elevate the level of heavy metals in the surrounding to prevent contamination of soil over time which could be detrimental to the health of the populace.

*Keywords: Heavy metals; pawpaw; permissible limit; scent leaf; targeted values.*

## 1. INTRODUCTION

Soil plays an essential part in human societies, including food production, as a natural component of the Earth. In recent decades, the soil compartment has absorbed a significant number of contaminants from a variety of sources, including heavy metals, as a result of rising industrialization and urbanization [1]. Soil is the most important environmental component because it acts as a natural buffer for heavy metals by controlling their transmission to the atmosphere, hydrosphere, and biosphere, as well as acting as a geochemical sink for contaminants [2]. Contaminants in contaminated soils will spread to other parts of the environment, creating an indirect threat to human health [3,4]. Because of their endurance and toxicity, heavy metals are among the most significant anthropogenic contaminants [5]. Heavy metal pollution of soil is a major concern in many parts of the world [6,7]. Natural trace metal concentrations in soils are determined by the chemistry of the parent rocks from which they are derived. Human activity has the potential to significantly increase metal concentrations in soil, particularly in urban settings [8]. Because of the sorption of metals on particles and their limited mobility, soils that have been poisoned often remain in this state for a long time [9,10].

Environmental heavy metal contamination is a worldwide issue that has gotten a lot of attention [11]. Rapid industrialisation, including dust emissions from cement manufacturing and heavy metal pollution of the environment [12,13], is one

of the principal pathways of heavy metals introduction into the environment [11]. Heavy metals discharged into the environment are thought to end up in soils [14,15,16]. Heavy metals can be sensitive markers for monitoring environmental contamination. According to Nogaj *et al.* [17], the amounts of various chemical elements in soil influence the intensity of biological processes as well as determining whether dietary intake of a certain food is safe for consumption. Heavy metals are potentially harmful to crops, animals, and humans when contaminated soils are utilized for agricultural production, according to Liang *et al.* [18], because heavy metals are easily stored in important organs of crops cultivated on these contaminated soils [18]. Humans and animals that ingest such crops are likewise at risk of poisoning. This has fueled research into the environmental challenges of heavy metal pollution in soil in recent decades [19], including the establishment of an ecological geochemical survey to aid in identifying levels of heavy metal pollution and potential harm. The present study addresses the level of heavy metals contamination (Pb, Zn, Ni and Cd) in the soils of Amasoma community in Bayelsa State, Nigeria.

## 2. MATERIALS AND METHODS

### 2.1 Sample Area

Amassoma community in Southern Ijaw LGA, Bayelsa State of Nigeria was selected for sampling. Sampling was done at random from

three different locations within Amassoma metropolis. These locations were selected at random to centralize the sample stations within the community (Sample location) as shown in Fig. 1. Geographically, sample area has land mass of 2,682km<sup>2</sup> and a population of 319413 at the 2006 census. The people are predominant farmers, fishermen, business men and civil servants.

## 2.2 Soil Sample Collection and Preparation

Twenty four soil samples were randomly collected from the study location with the use of soil auger. The soil samples were collected from the depth of 0-30 cm. The soil samples were air-dried and crushed into dust in order to provide for proper analysis [20].

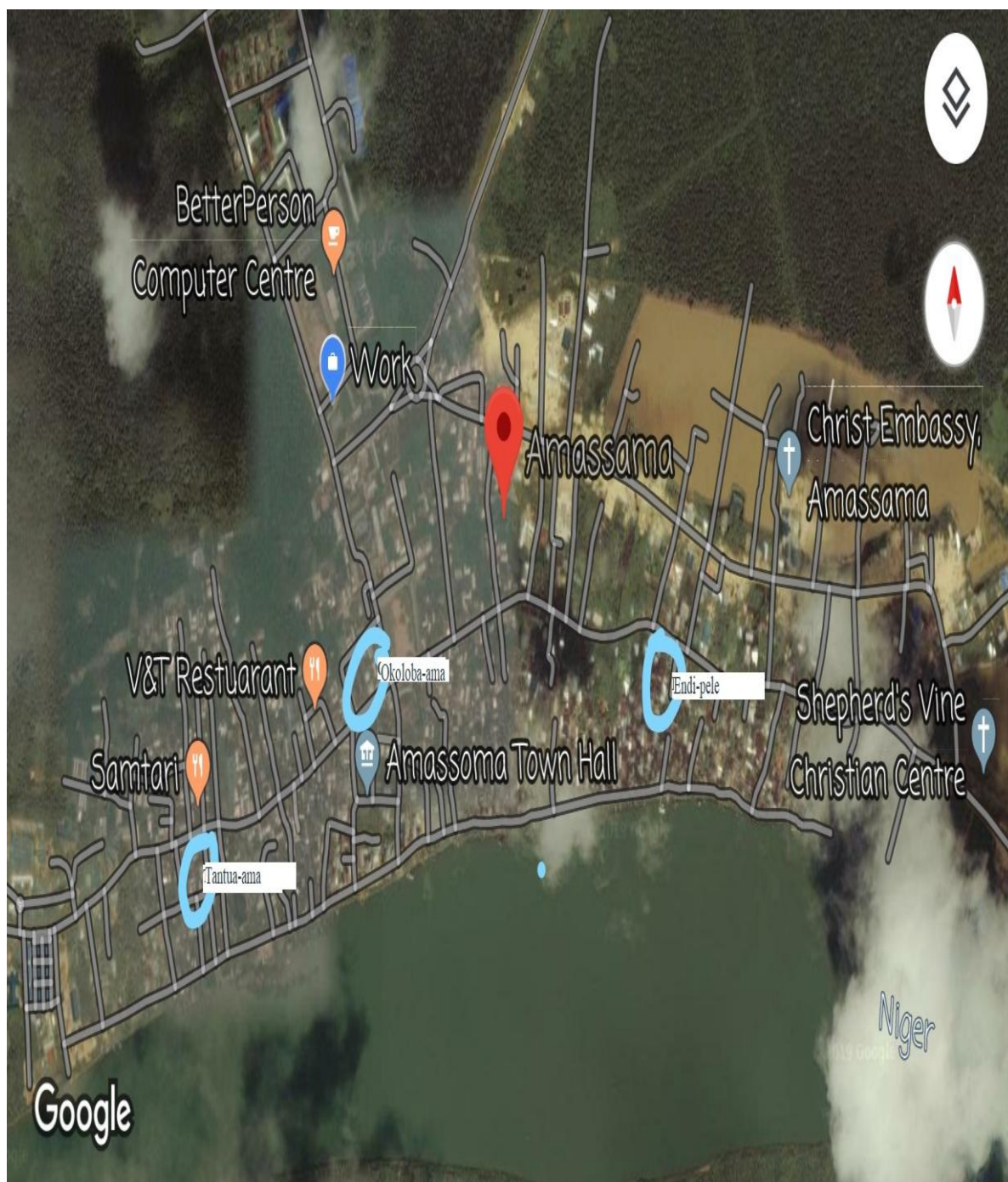


Fig. 1. Study Area Map (Amassoma Community), Showing sampling sites

### 2.3 Sample Analysis

The laboratory equipments used were beakers and flasks, solar thermo elemental atomic absorption spectrophotometer (F-AAS), burner, hollow cathode lamps, graphical display and recorder, pipette (micro liter with disposal tips), pressure reducing valves, glassware, volumetric flask, air, acetylene, metal free water, stock metal solution, potassium chloride solution, aluminium nitrate solution, hydrogen tetraoxosulphate (vi) acid ( $H_2SO_4$ ), trioxonitrate (v) acid ( $HNO_3$ ), perchloric acid ( $HClO_4$ ) of suitable precision and accuracy were used for the laboratory analyses in order to obtain accurate results.

A total volume of 100ml of  $H_2SO_4$ ,  $HNO_3$ , and  $HClO_4$  in the ratio of 40%: 40%: 20% was mixed together. A portion (1g) of the sample was weighed into a conical flask; 2ml of the mixed acid was taken to each of the sample in the conical flask. It was digested in a fume cupboard with hot plate until white fumes appeared. After that, it cooled and was filtered into 100ml volumetric flask and made up to mark with distilled water [21].

This technique operates on Beer-Lambert's law which states that Absorbance is directly proportional to concentration. Hence, absorption spectrometry is used to evaluate the concentrations of analyte in a sample; it requires standards with known analyte concentrations. The light source is a lamp with a cathode of the same element being determined since each element has a characteristic wavelength that is readily absorbed. An AAS consists of an atomizer burner to convert the element in the solution to free atoms in an acetylene flame, a monochromatic to disperse and isolate emitted and a photomultiplier to detect and amplify the light transitory through the monochromatic into its component wavelength. The photomultiplier then receives only the isolated resonance wavelength and absorption of its light by the sample. After proper lamp for the test element has been inserted, the intensity of the light is measured by passing through the unrestricted flame. Then the sample is introduced into the flame and the concentration of the elements in the sample is determined by the increase in light intensity.

### 2.4 Statistical Analysis

Twenty four soil samples were analysed using the Statistical Programme for Social Sciences

(SPSS). A t test was used to determine the significant difference between the means of the various samples, using  $P \leq 0.05$  level of significance [22].

## 3. RESULTS AND DISCUSSION

The distribution of metal in the soil in the Amasoma community suggests that there are various sites with low Zn, Ni, Pb, and Cd concentrations that are not contaminated currently. The low levels of Zn, Ni, Pb, and Cd were contrary to those found by Bi *et al.* [23] and Wu *et al.* [24].

The present study determined the concentrations of Lead (Pb), Nickel (Ni), Cadmium (Cd), and Zinc (Zn), in pawpaw soil and scent leaf soil. From the sample data analysis, the average Pb contents in pawpaw soil and scent leaf soil were 1.283 mg/kg and 1.437 mg/kg respectively. The average Cd in pawpaw soil and scent leaf soil were 0.256 mg/kg and 0.256 mg/kg respectively. The average Ni compositions in pawpaw soil and scent leaf soil were 4.71 mg/kg and 5.09 mg/kg respectively. While the average Zn in pawpaw soil and scent leaf soil is 2.280 mg/kg and 2.160 mg/kg respectively. This is in consonance with the research of Olatunde and Onisoya [25], which ascertained that the heavy metals concentrations in pawpaw soil and scent leaf occurred in a decreasing order pattern of  $Pb > Cu > Hg > Cd > Zn$ .

This study evaluated the extent to which soil is contaminated by these heavy metals, comparing their levels with prescribed benchmark values of WHO for soil heavy metals. The average Lead (Pb) contents in pawpaw soil and scent leaf soil were 1.283 mg/kg and 1.437 mg/kg, respectively. When compared with targeted limit of 85 mg/kg recommended by the WHO, pawpaw soil and scent leaf soil are below the permissible limits. The average Cadmium (Cd) contents in pawpaw soil and scent leaf soil were 0.256 and 0.256, respectively. When compared with targeted limit of 0.8 mg/kg recommended by the WHO, pawpaw soil and scent leaf soil are below the permissible limits. The average Nickel (Ni) contents in pawpaw soil and scent leaf soil were 4.706 mg/kg and 5.087 mg/kg, respectively. When compared with targeted limit of 35 mg/kg recommended by the WHO, pawpaw soil and scent leaf soil are below the permissible limits. The Average Zinc (Zn) contents in pawpaw soil and scent leaf soil were 2.28 mg/kg and 2.16 mg/kg respectively. When compared with targeted limit of 50 mg/kg recommended by the

WHO, papaw fruit, papaw soil and scent leaf soil are below the permissible limits.

Table 1 showed the mean concentration, standard deviation and the difference of the concentration mean and the recommended permissible limit by WHO of Lead (Pb) in papaw soil, and scent leaf soil in mg/kg. The table showed that the average concentration of Pb in papaw soil and scent leaf soil were 1.28mg/kg, 1.44mg/kg respectively, with observed standard deviations of 0.17, 0.26 respectively. The table also compared the average value of Pb in papaw soil and scent leaf soil with 41 the targeted value of Pb recommended by WHO. The table showed that the mean difference for papaw soil and scent leaf soil were -83.72 and -83.56 respectively when compared with the allowable limit of 85 mg/kg recommended by WHO. The papaw soil sample showed that  $P = 0.000$  at  $P < 0.05$ . This showed that the mean of the sample was significantly different.

Table 2 showed the mean concentration, standard deviation and the difference of the concentration mean and the recommended permissible limit by WHO of cadmium (Cd) in papaw soil, and scent leaf soil in mg/kg. The table showed that the mean average of Cd in papaw soil and scent leaf soil were 0.26mg/kg and 0.26mg/kg respectively, with observed

standard deviations of 0.029, 0.006 respectively. The table also compared the average value of Cd in papaw soil and scent leaf soil with the targeted value of Cd recommended by WHO. The table showed that the mean 42 difference for papaw soil and scent leaf soil are -0.62 and -0.56 respectively when compared with the allowable limit of 0.8 mg/kg recommended by WHO. The papaw soil sample showed that  $P = 0.001$  at  $P < 0.05$ . This showed that the mean of the sample is significantly different.

Table 3 showed the mean concentration, standard deviation and the difference of the concentration mean and the recommended permissible limit by WHO of Nickel (Ni) in papaw soil, and scent leaf soil in mg/kg. The table showed that the average Ni in papaw soil and scent leaf soil was 4.71mg/kg and 5.09mg/kg respectively, with observed standard deviations of 3.76, 3.88 respectively. The table above compared the average value of Ni in papaw soil and scent leaf soil with the targeted value of Ni recommended by WHO. The table shows that the mean difference for papaw soil and scent leaf soil were -30.29 and -29.91 respectively when compared with the allowable limit of 35 mg/kg recommended by WHO. The papaw soil 43 sample shows that  $P = 0.005$  at  $P < 0.05$ . This shows that the mean of the sample was significantly different.

**Table 1. Descriptive Statistics on the Concentration of Lead in the Soil Samples with the Permissible Limit Recommended by WHO**

Treatment	WHO permissible limit = 2					
	T	df	Sig. (2-tailed)	Mean	Mean Difference	Std. Deviation
Pawpaw Soil	-842.330	2	0.000	1.2833	-83.71667	0.17214
Scent Leaf Soil	-404.181	2	0.000	1.4367	-83.56333	0.35810

**Table 2. Descriptive Statistics on the Concentration of Cadmium in the Soil Samples with the Permissible Limit Recommended by WHO**

Treatment	Targeted Value = 0.8					
	T	df	Sig. (2-tailed)	Mean	Mean Difference	Std. Deviation
Pawpaw Soil	-32.600	2	0.001	0.2567	-0.54333	0.02887
Scent Leaf Soil	-163.000	2	0.000	0.2567	-0.54333	0.00577

**Table 3. Descriptive Statistics on the Concentration of Nickel in the Soil Samples with the Permissible Limit Recommended by WHO**

Treatment	Targeted Value = 35					
	T	df	Sig. (2-tailed)	Mean	Mean Difference	Std. Deviation
Pawpaw Soil	-13.968	2	0.005	4.7067	-30.29333	0.17214
Scent Leaf Soil	-163.000	2	0.006	5.0867	-29.91333	3.88181

**Table 4. Descriptive Statistics on the Concentration of Zinc in the Soil Samples with the Permissible Limit Recommended by WHO**

Treatment	Targeted Value = 35					
	T	df	Sig. (2-tailed)	Mean	Mean Difference	Std. Deviation
Pawpaw Soil	-84.886	2	0.000	2.2800	-47.72000	0.97370
Scent Leaf Soil	-76.978	2	0.000	2.1600	-47.84000	1.07643

Table 4 showed the mean concentration, standard deviation and the difference of the concentration mean and the recommended permissible limit by WHO of Zinc (Zn) in pawpaw soil, and scent leaf soil in mg/kg. The table showed that the average observed amount of Zn in pawpaw soil and scent leaf soil were 2.28mg/kg and 2.16mg/kg respectively, having standard deviations of 0.97 and 1.08 respectively. The table also compared the average value of Zn in pawpaw soil and scent leaf soil with the targeted value of Zn recommended by WHO. The table showed that the mean difference for pawpaw soil and scent leaf soil were -47.72 and -47.84 respectively when compared with the allowable limit of 50 mg/kg recommended by WHO. The pawpaw soil sample showed that  $P = 0.000$  at  $P < 0.05$ . This value shows that the mean of the sample was significantly different.

#### 4. CONCLUSION

This study showed the presence of the selected heavy metals in the soil samples. The analyzed soil samples were below the permissible limit of lead (Pb), Nickel (Ni), cadmium (Cd), and Zinc (Zn) which indicate that the soils around the Amasoma community in Bayelsa State may not be contaminated presently but appropriate measures should be put in place to ensure that there will be no gradual accumulation of these heavy metals which may result to soil contamination over time thereby resulting to serious environmental concern. This study has been able to elucidate the level of heavy metals contamination melted to the soil.

#### COMPETING INTERESTS

Authors have declared that no competing interests exist.

#### REFERENCES

- Wei B, Yang L. A review of heavy metal contaminations in urban soils, urban; 2010.
- Kabata-Pendias A, Pendias H. Trace Elements in Soils and Plants. CRC Press, New York; 2001.
- Zhang Q, Shi X, Huang B, Yu D, Oborn I, Blomback K, Wang H, Pagella TF, Sinclair FL. Surface water quality of factory-based and vegetable-based peri-urban areas in the Yangtze River Delta region, China. *Catena* 2007;69(1):5764.
- Cui Y, Zhu YG, Zhai R, Huang Y, Qiu Y, Liang J. Exposure to metal mixtures and human health impacts in a contaminated area in Nanning, China. *Environ. Int.* 2005;31(6):784e790
- Adriano DC. Trace Elements in Terrestrial Environments: Biogeochemistry, Bioaccessibility and the Risks of Metals, Second ed. Springer-Verlag, New York Berlin Heidelberg; 2001.
- Facchinelli A, Sacchi E, Mallen L. Multivariate statistical and GIS-based approach to identify heavy metal sources in soils. *Environ. Pollut.* 2001;114(3): 313e324.
- Solgi E, Esmaili-Sari A, Riyahi-Bakhtiari A, Hadipour M. Soil contamination of metals in the three industrial estates, Arak, Iran. *Bull. Environ. Contam. Toxicol.* 2012;88(4): 634e638.
- Guagliardi I, Buttafuoco G, Cicchella D, De Rosa R. A multivariate approach for anomaly separation of potentially toxic trace elements in urban and periurban soils: an application in a southern Italy area. *J. Soils. Sediments* 2013;13(1): 117e128.
- Ferri R, Donna F, Smith DR, Guazzetti S, Zacco A, Rizzo L, Bontempi E, Zimmerman NJ, Lucchini RG. Heavy metals in soil and salad in the proximity of historical ferroalloy emission. *J. Environ. Prot.* 2012;3(5):374.
- Peris M, Recatal AL, Mico, CS, Anchez RS, Anchez J. Increasing the knowledge of heavy metal contents and sources in agricultural soils of the European Mediterranean region. *Water. Air. Soil. Pollut.* 2008;192(1e4):25e37.
- Qingjie G, Jun D, Yunchuan X, Qingfei W, Liqiang Y. Calculating pollution indices by heavy metals in ecological geochemistry

- assessment and a case study in parks of Beijing. Journal of China University of Geosciences, 2008;19(3):230
12. Kumar A, Singh UP. Environmental Protection and Industrial Development. Ashishi Publishing House, New Delhi; 1990.
  13. Oyedele DJ, Aina PO, Oluwole F, Asubiojo IO. Preliminary Assessment of Pollution Effects of Cement Dust on Soil and Biomass production. A Seminar delivered at 18th Annual Conference of the Nigerian Soil Society, University of Maiduguri, Maiduguri, Nigerial; 1990
  14. Banat KM, Howari FM, Al-Hmada AA. Heavy metals in urban soils of Central Jordan: should we worry about their environmental risks. Environ. Res. 2005;97:258.
  15. Sun Y, Zhou Q, Xie X, Liu R. Spatial, sources and risk assessment of heavy metal contamination of urban soils in typical regions of Shenyang, China. J. Hazard. Mater. 2010; 174:455, 2010.
  16. Pekey H, Karakas D, Ayberk S, Tolun L, Bakoglu M. Ecological risk assessment using trace elements from surface sediments of Izmit Bay, Turkey. Mar. Pollut. Bull. 2004;48:946.
  17. Nogaj E, Kowol J, Kwapulinski J, Brodziakdopierala B, Pauksztó A, Rochel R, Fischer A, Bogunia M, Mirosławski J. Contribution of bioavailable forms of chosen metals in soils to heavy-metal contamination of wild mushroom. Pol. J. Environ. Stud. 2012;21(1):165
  18. Liang J, Chen C, Song X, Han Y, Liand Z. Assessment of heavy metal pollution in soil and plant from Dunhua sewage irrigation area. Int. J. Electrochem. Sci. 2011;6:5314
  19. Zhang LP, Ye X., Feng HE, Jing Y, Ouyang T, Yu X, Liang R, Gao C, Chen W. Heavy metal contamination in Western Xiamen bay sediments and its vicinity, China. Mar. Pollut. Bull. 2007;54:974.
  20. Wilke BM, Blume HP, Brummer GW, Fleige H, Horn R, Kandeler E, Kogelknabler I, et al. Scheffer/Schachtshabel Soil science, 1st edition; Springer: Berlin, Germany.
  21. Luevano J, Damodaran C. A Review of Molecular Events of Cadmium-Induced Carcinogenesis. Journal of Environmental Pathology, Toxicology and Oncology. 2014;33(3):183–194.
  22. Iqbal J, Shah MH. Distribution, correlation and risk assessment of selected metals in urban soils from Islamabad, Pakistan. J. Hazard. Mater. 2011;192(2):887e898.
  23. Bi X, Feng X, Yang Y, Qiu G, Li G, Li F, Liu T, Fu Z, Jin Z. Environmental contamination of heavy metals from zinc smelting areas in Hezhang county, western Guizhou, China. Environmental International, 2006;32:883
  24. Wu Y, Xu Y, Zhang J, Hu S. Evaluation of ecological risk and primary empirical research on heavy metals in polluted soil over Xiaoqinling gold mining region, Shaanxi, China. Trans, Nonferrous Met. Soc. China, 2010;20:688
  25. Olatunde, Onisoya. Review on sources and effect of heavy metal in soil: itsBioremediation. International Journal of Research in Applied, Natural and Social Sciences. 2017;2347-4580

© 2021 Assayomo et al.; This is an Open Access article distributed under the terms of the Creative Commons Attribution License (<http://creativecommons.org/licenses/by/4.0>), which permits unrestricted use, distribution, and reproduction in any medium, provided the original work is properly cited.

Peer-review history:  
The peer review history for this paper can be accessed here:  
<https://www.sdiarticle5.com/review-history/77605>